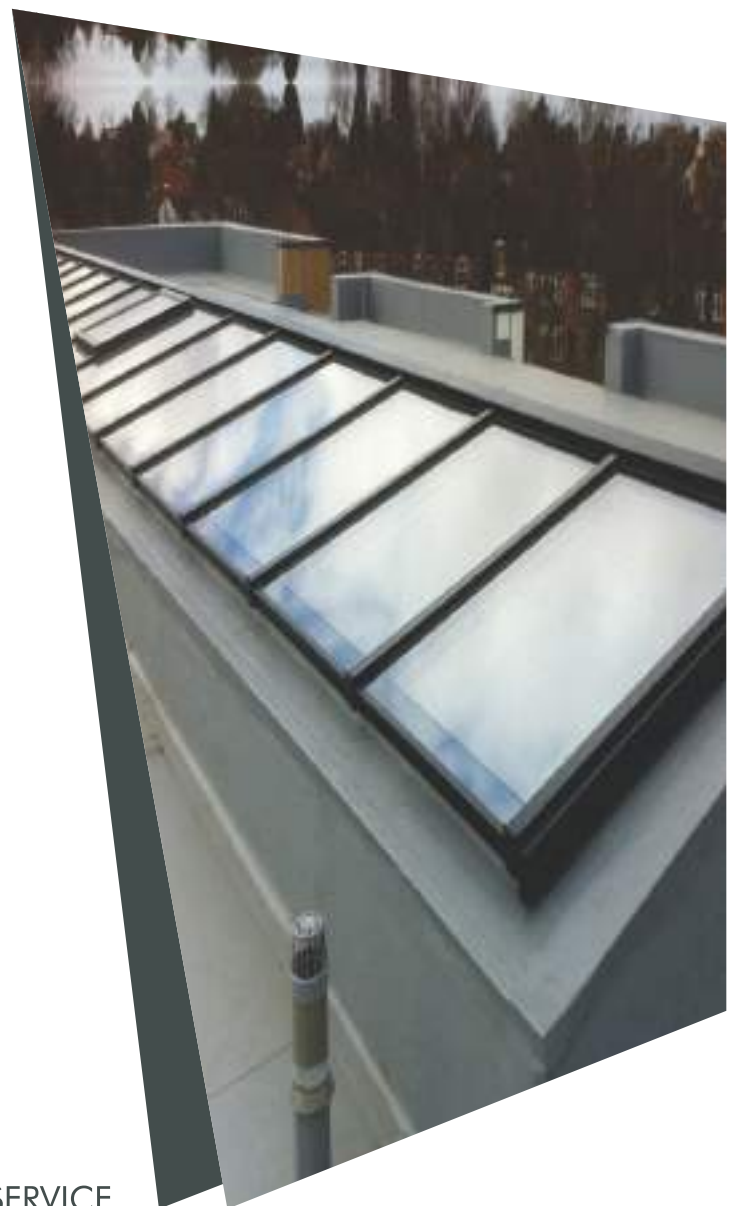
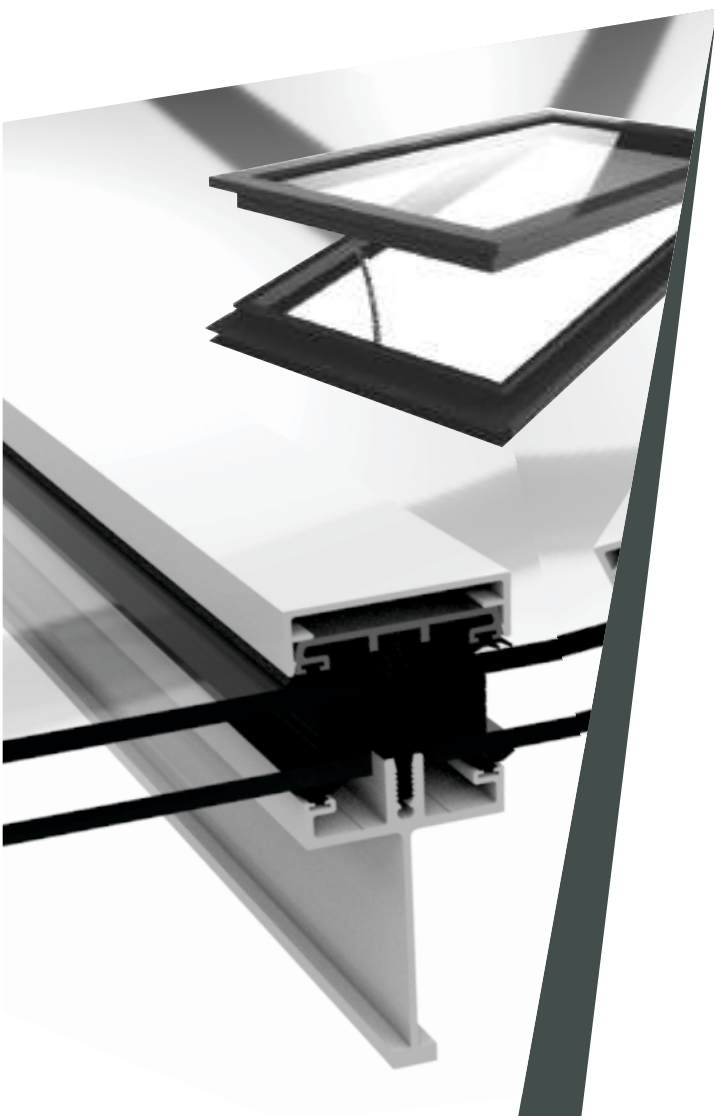


**Standard**  
PATENT GLAZING  
ESTABLISHED 1902

# SKYLINE

PATENT GLAZING SYSTEM



100 YEARS OF SERVICE



## SKYLINE

Our Skyline range of glazing bars offer an economical roof glazing solution incorporating slim sightlines. The glazing bar's strength is provided by an internal stalk (or fin) which is cut away at the top and bottom main fixing positions.

An internal snap-on ornate capping system (PC4) is also available if desired to fully conceal the internal stalk giving the appearance of a feature timber rafter.

The glazing bar is weathered by a screw on pressure cap (PC1) with a choice of plain (PC2) or ornate (PC3) cosmetic outer snap-on cappings to conceal all fixing screws.

This system is able to accommodate double and triple glazed applications where compliance with Building Regulations Document L are a requirement but is also popular for single glazed applications such as feature canopies and unheated spaces.

Available in three glazing bar sizes depending on the design span with fin depths of 50mm, 70mm and 100mm. This glazing system is capable of spanning up to 4 metres unsupported with double glazed infills weighing 30kg/m<sup>2</sup>.

## Aluminium Head Flashing



top fixing plate

bottomfixing plate

Visit our web site to download AutoCAD or PDF files for all of the Skyline Box range including a wealth of typical interface details with common supporting structure designs.

[www.patent-glazing.com/downloads.html](http://www.patent-glazing.com/downloads.html)

*Performance Data for Skyline Patent Glazing Bars*

| Bar Section | Fin Depth mm | Ix-xcm4   | Zx-x cm3 | Roof Span (mm) * |                |                |
|-------------|--------------|-----------|----------|------------------|----------------|----------------|
|             |              |           |          | Double Glazing   | Single Glazing | Canopy Glazing |
| SPG2        | 55           | 240,628   | 5,032    | 1050-2630mm      | 2000-3290mm    | 1510-2810mm    |
| SPG3        | 75           | 500,995   | 8,318    | 1520-3530mm      | 3500-4220mm    | 1950-3610mm    |
| SPG4        | 100          | 1,296,896 | 18,875   | 2450-4470mm      | 5000-6000mm    | 2930-4970mm    |

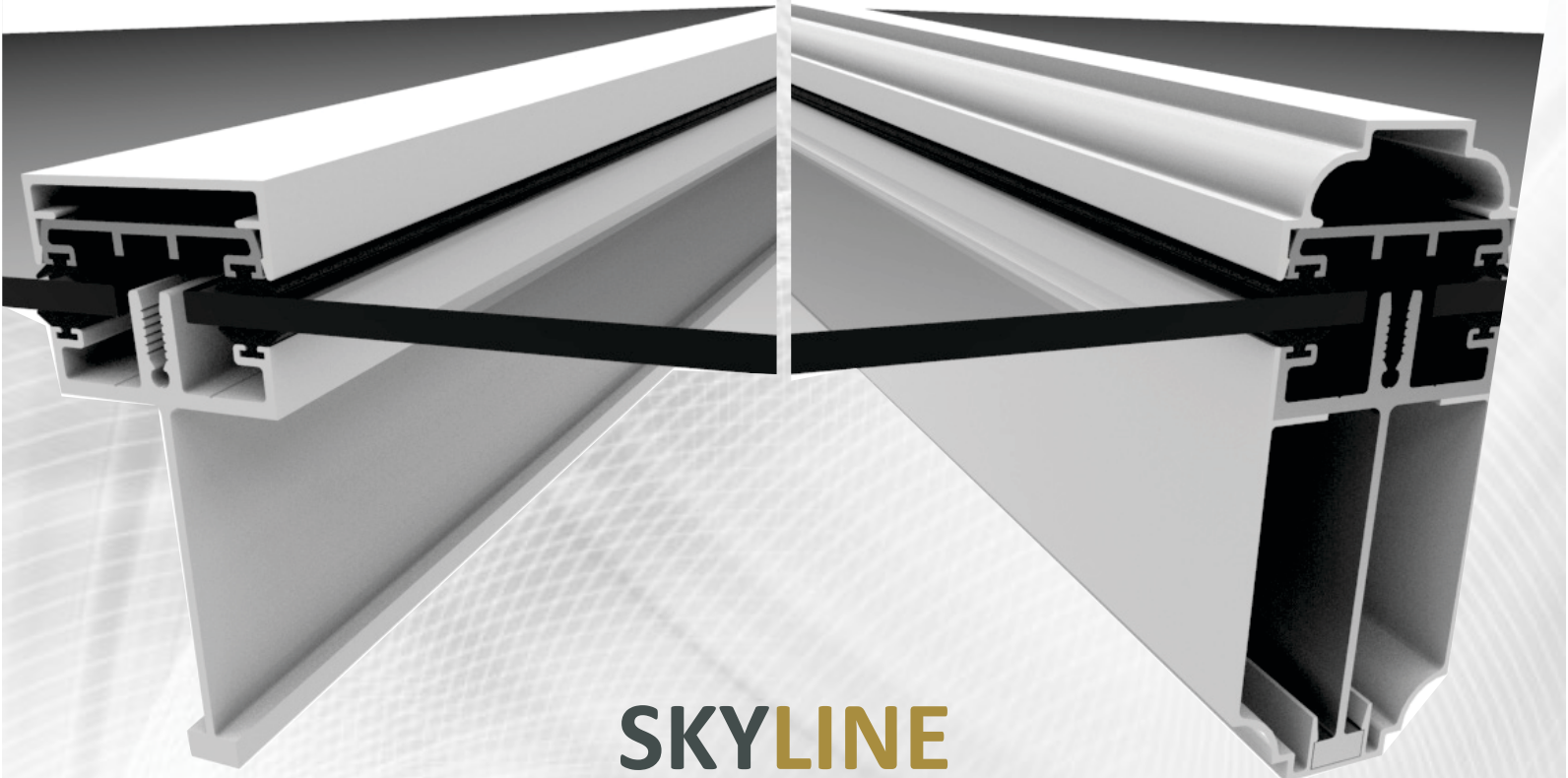
Subject to Site Specific Loadings



## SKYLINE

Skyline SPG3 type thermally broken extruded aluminium Glazing Bar with screw-on PC1 capping and snap-on cosmetic square topped PC2 capping section - double glazed with 28mm thick double glazed units

Skyline SPG3 type thermally broken extruded aluminium Glazing Bar with screw-on PC1 capping and snap-on cosmetic ornate topped PC3 and ornate internal PC4 capping sections - double glazed with 28mm thick double glazed units

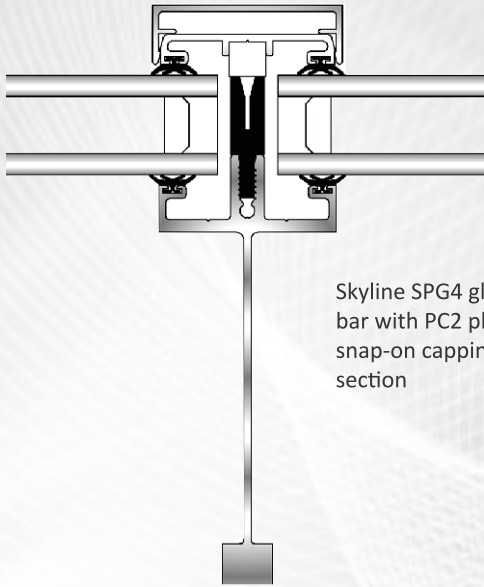


## SKYLINE

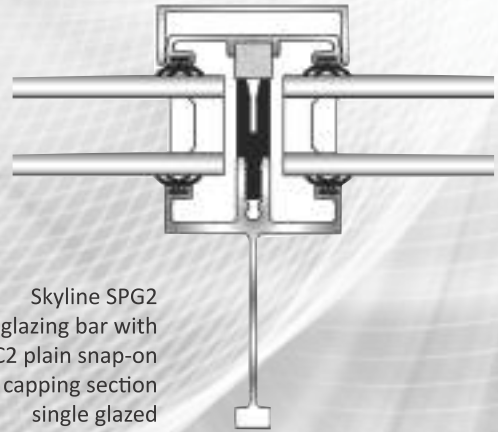
Skyline SPG3 type extruded aluminium Glazing Bar with screw-on PC1 capping and snap-on cosmetic square topped PC2 capping section - single glazed with 6mm thick glass

Skyline SPG3 type extruded aluminium Glazing Bar with screw-on PC1 capping and snap-on cosmetic ornate topped PC3 and ornate internal PC4 capping sections - single glazed with 6mm thick glass

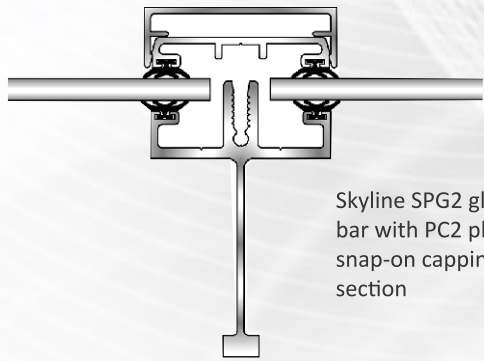
## SKYLINE



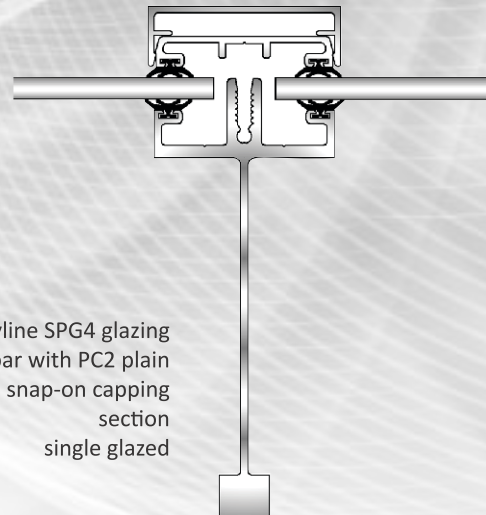
Skyline SPG4 glazing bar with PC2 plain snap-on capping section



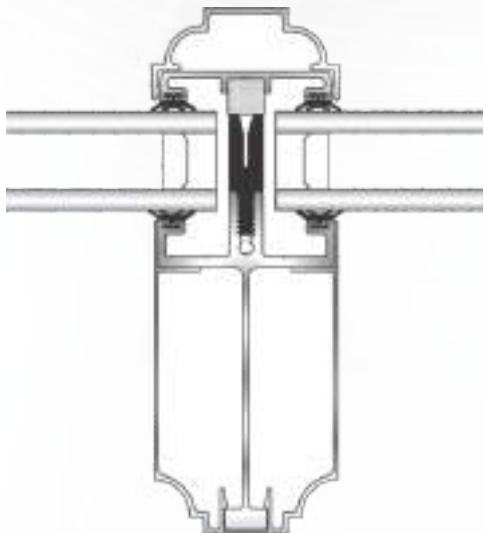
Skyline SPG2 glazing bar with PC2 plain snap-on capping section single glazed



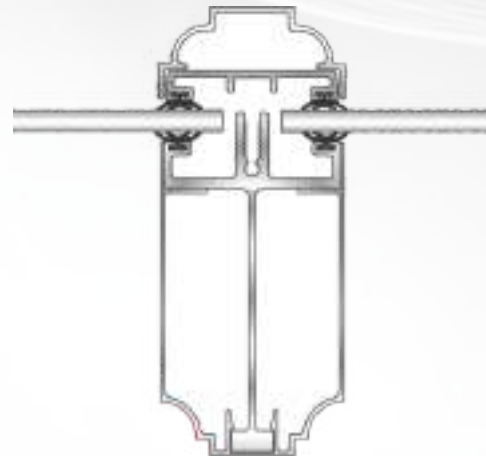
Skyline SPG2 glazing bar with PC2 plain snap-on capping section



Skyline SPG4 glazing bar with PC2 plain snap-on capping section single glazed



Skyline SPG3 glazing bar with PC3 ornate snap-on capping section and PC4 internal ornate snap-on capping double glazed



Skyline SPG3 glazing bar with PC3 ornate snap-on capping section and PC4 internal ornate snap-on capping single glazed

Northfleet Water Tower



Contractor: Kimberley Clarke

Sunny Bank Mills, Pudsey



Contractor: Triton Construction Ltd

Swansea Market Hall



Contractor: R&M Williams Ltd

Hook Primary School, Hampshire



Contractor: Mansell Construction Services Ltd

Gosport Junior School



Contractor: ROK



Winchester Discovery Centre



Contractor: Mansell Construction Services Ltd

Wharf Railway Station, Tywyn



Contractor: Watkin Jones & Sons Ltd

Sainsbury's Supermarket, Matlock



Contractor: Bowmer & Kirkland Ltd

Safeway Supermarket, Dinnington



Contractor: Bowmer & Kirkland Ltd

Cranleigh University



Contractor: R. Durnell & Sons Ltd

Domestic Dwelling



Contractor: Keepmoat



The Standard Patent Glazing Co Ltd  
Flagship House  
Forge Lane  
DEWSBURY  
West Yorkshire  
WF12 9EL

Tel 01924 461213

mail: [info@patent-glazing.com](mailto:info@patent-glazing.com)  
web: [www.patent-glazing.com](http://www.patent-glazing.com)



100 YEARS OF SERVICE