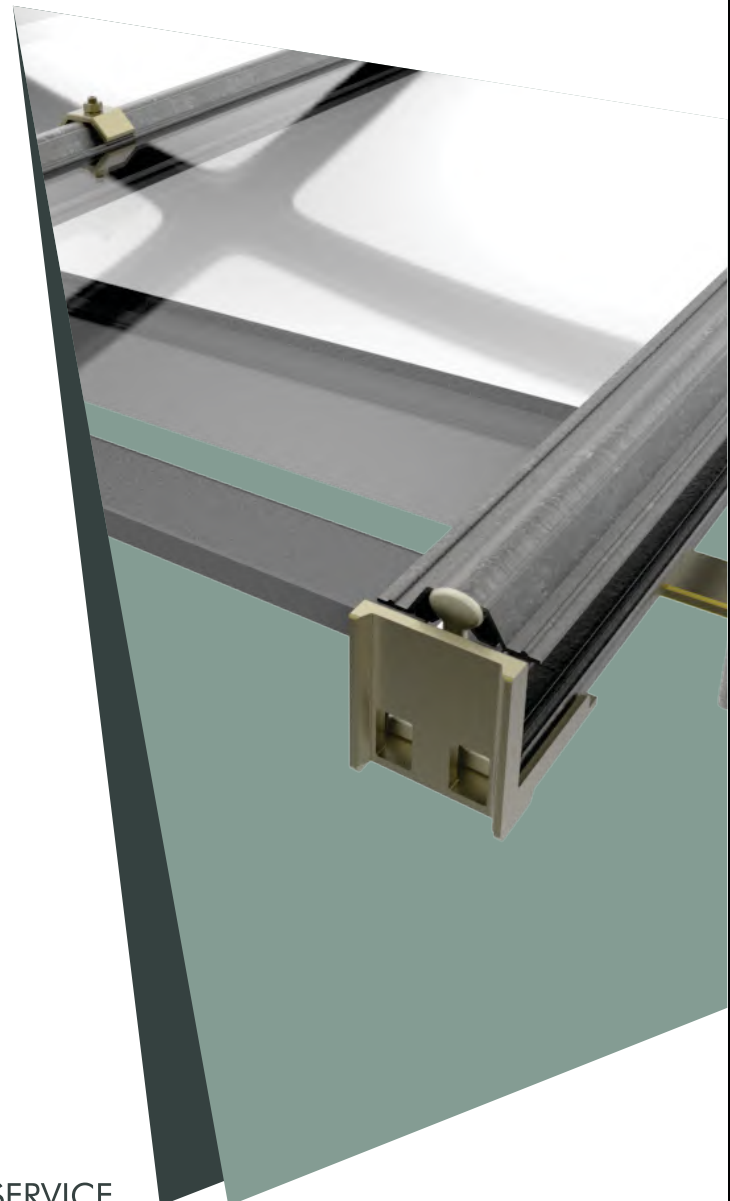


# HERITAGE

PATENT GLAZING SYSTEM



100 YEARS OF SERVICE

FOR LISTED AND HISTORIC BUILDINGS

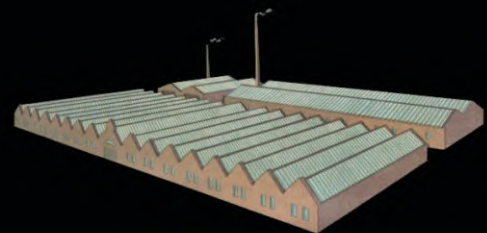
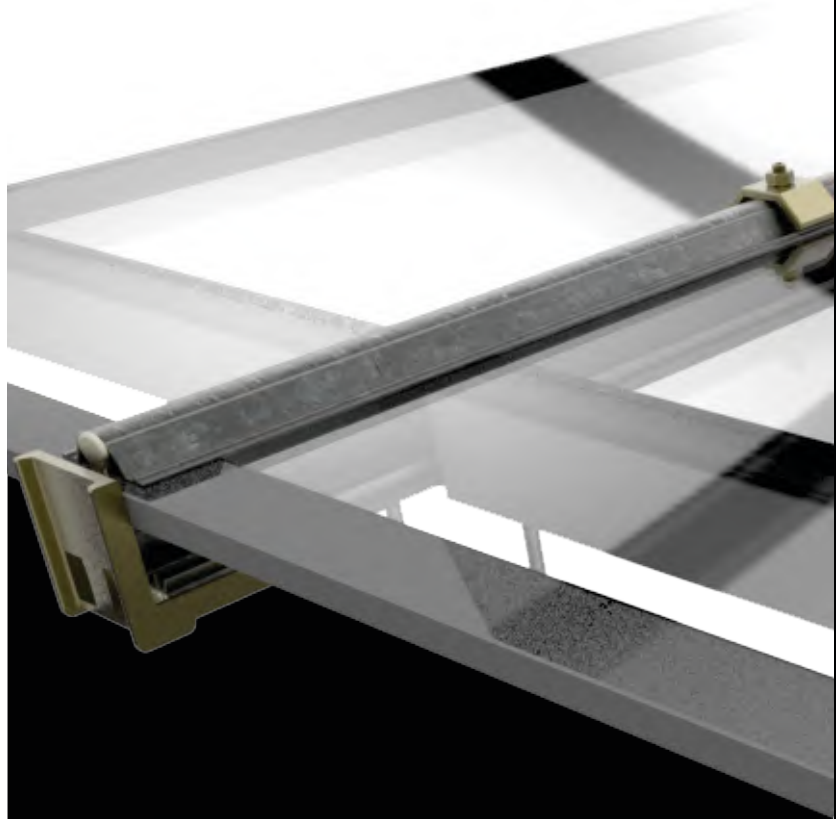
## HERITAGE PATENT GLAZING SYSTEM FOR LISTED AND HISTORIC BUILDINGS

From the late 1800's up until the late 1940's all patent glazing bars were manufactured to the same specification as our Heritage range.

The introduction of extruded aluminium sections after WWII resulted in all patent glazing companies offering glazing bars in aluminium until eventually every other company ceased production of their original steel bars in favour of aluminium sections only.

This has resulted in Standard Patent Glazing being the only company which continues to produce the original "HERITAGE" Lead Covered Patent Glazing Bar in both a single and double glazed version.

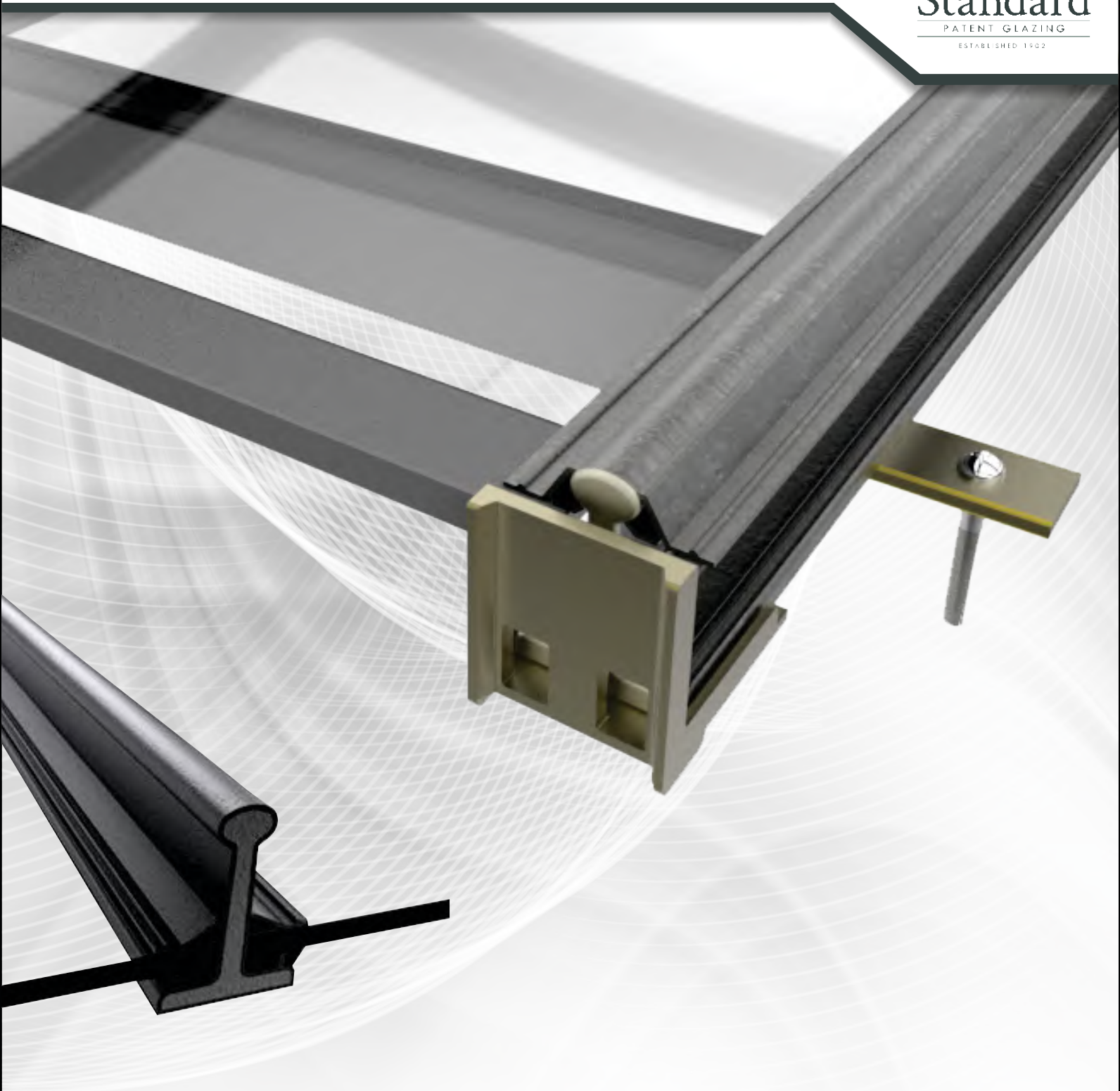
No other products are currently available on the market that can compare with our original bar which has a unique traditional look still popular with many of today's conservation architects and designers. The glazing bar consists of a galvanised rolled mild steel core which is mechanically inserted into a seamless lead extrusion covering that incorporates a twin wing weathering system and glass seatings. Our Victorian machinery incorporates special rollers to create a perfect secure fit between the separate steel and lead materials. The ends of the lead covers are then individually soldered by hand to produce a hermetic seal. Original cast brass fixing plates and glass stop are screwed on to produce the finished glazing bar.



**GLASS  
ROOFING**

*The  
Standard Patent  
Glazing Co. Ltd.*

❖ DEWSBURY ❖



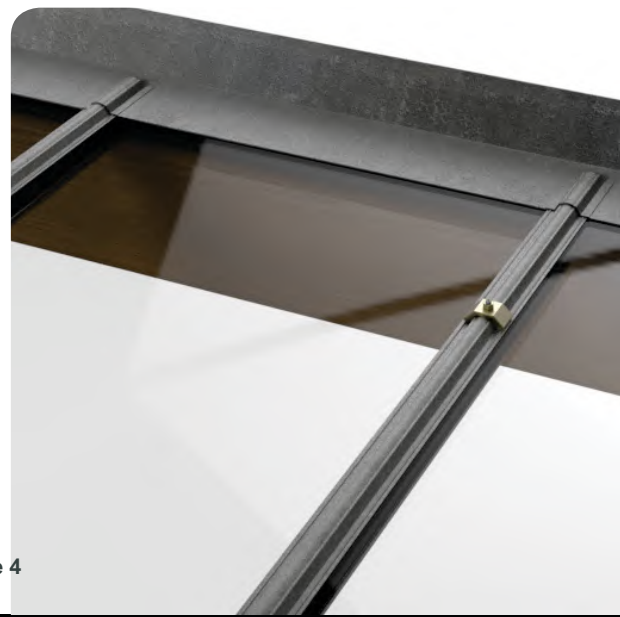
This unique system has a long and successful history and our Heritage Lead Covered steel glazing bar ranges still meets all the requirements of British Standard BS5516: 2004 Code of Practice for the design and installation of vertical and sloping patent glazing.

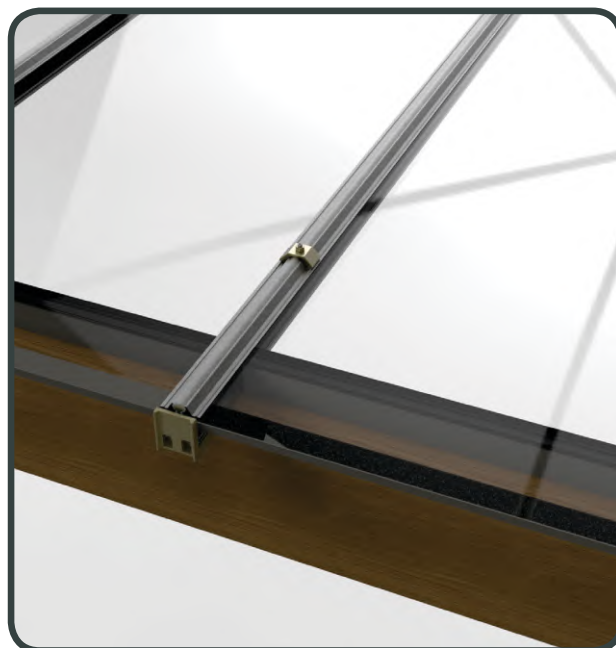
All systems have passed the most current CWCT Non-fragility tests in both single and double glazed formats.

## HERITAGE

 **LISTED BUILDING APPROVED**  
*perfect for Grade I and II listed buildings*

Our Heritage Lead Covered Steel Patent Glazing bars are a unique product and encapsulate the very essence of the Patent Glazing tradition. The glazing bar design originates from Victorian enterprise and ingenuity and has been produced unaltered by Standard Patent Glazing for over 110 years.

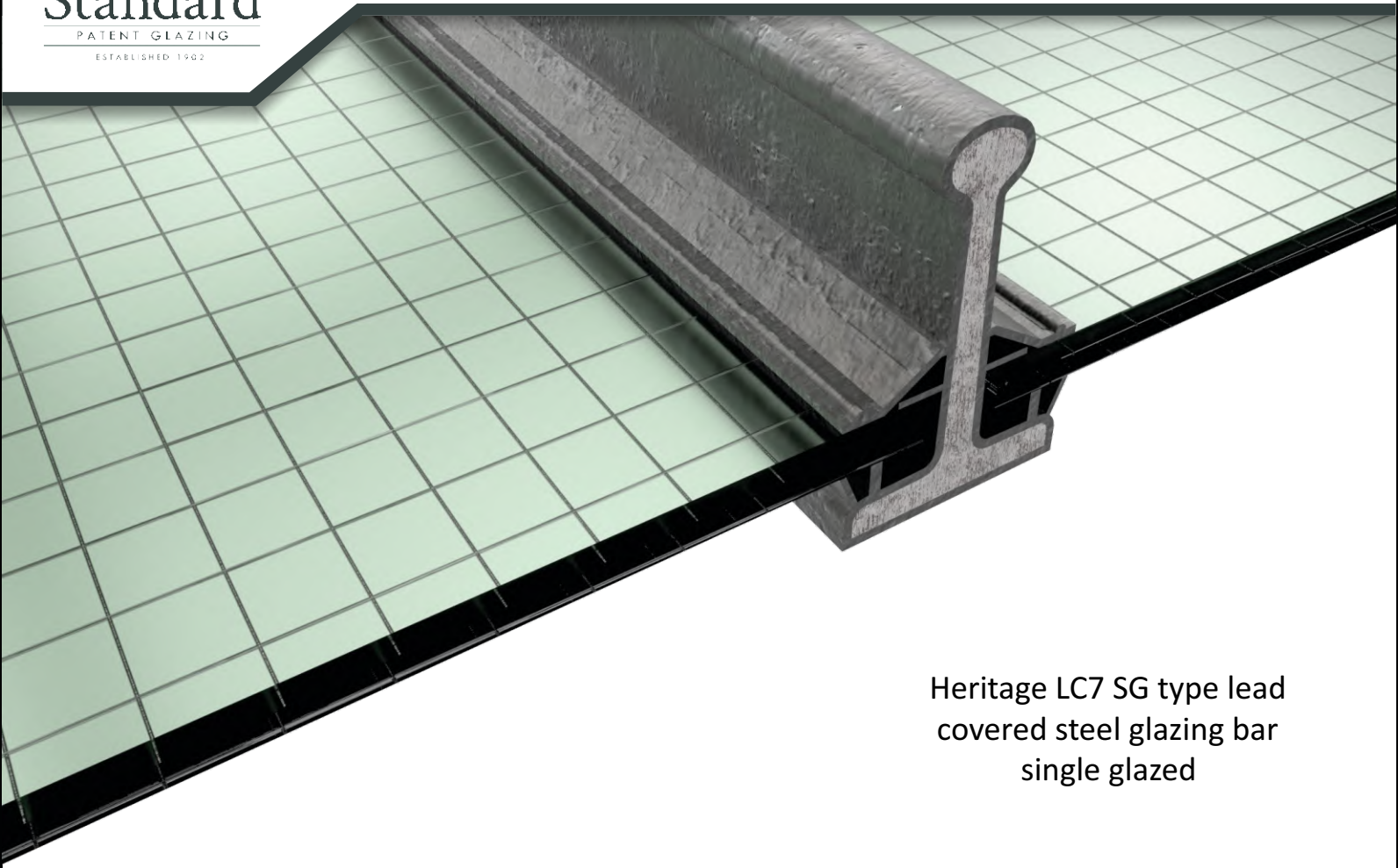




The Heritage patent glazing system is offered today for the replacement, refurbishment and upgrading of grade 1 & 2 listed buildings, buildings of historic value or other projects where traditional materials are required to provide sympathetic aesthetics with the surrounding building.

*Performance Data for Heritage Patent Glazing Bars*

Bar Section	Depth mm	Ix-xcm4	Zx-x cm3	Roof Span (mm) *		
				Double Glazing	Single Glazing	Canopy Glazing
No5 SG	45	96,297	3,381	-	1290-3220mm	1380-2530mm
No7 SG	53	136,847	4,189	-	1430-3570mm	1540-2800mm
No7 DG	53	136,847	4,189	1350-3270mm	-	



Heritage LC7 SG type lead covered steel glazing bar single glazed

 **SINGLE GLAZING**  
6-9MM THICK ONLY

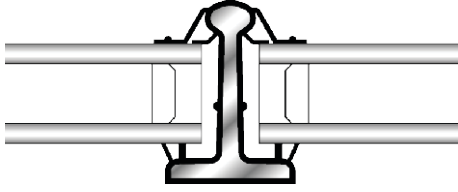


Heritage LC7 DG type lead covered steel glazing bar double glazed

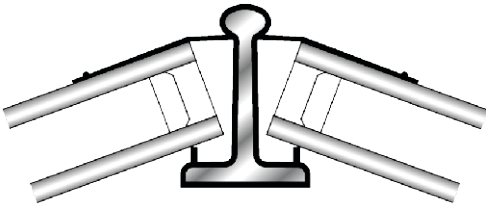
 **TRIPLE GLAZING**  
30MM THICK ONLY

 **DOUBLE GLAZING**  
30MM THICK ONLY

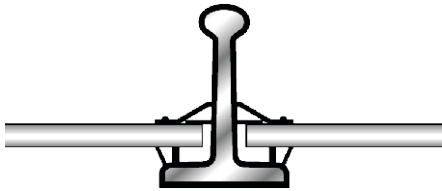
## HERITAGE



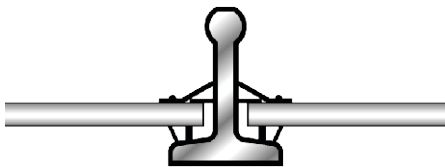
Heritage LC7 DG type lead covered steel glazing bar - double glazed



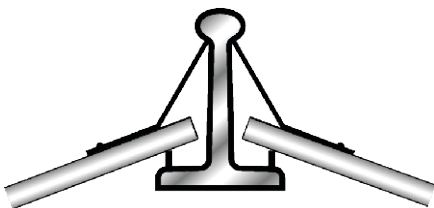
Heritage LC7 DG type lead covered steel hip glazing bar - double glazed



Heritage LC7 SG type lead covered steel glazing bar - single glazed

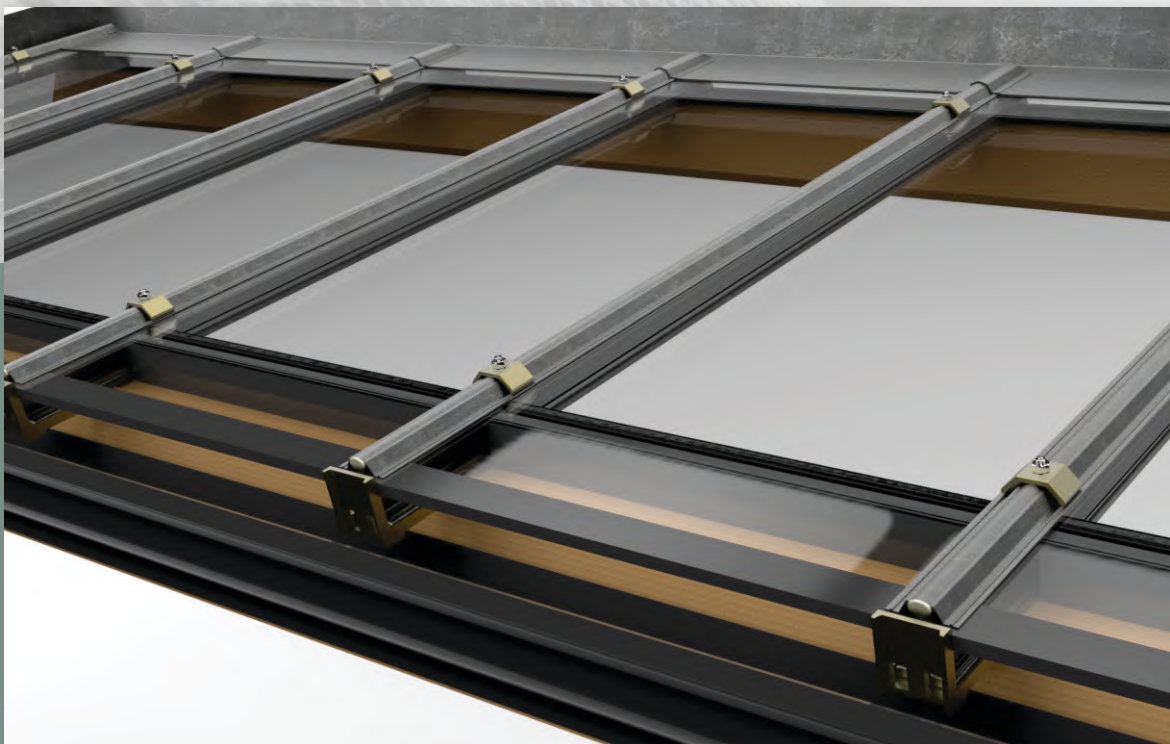
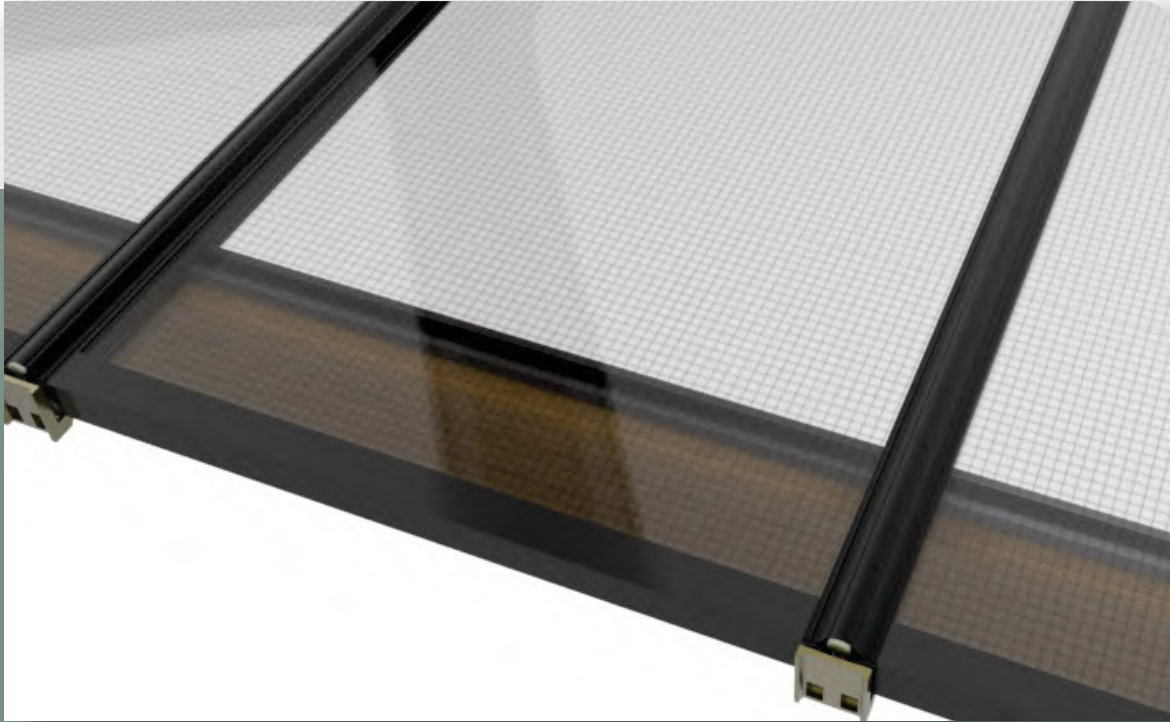


Heritage LC5 SG type lead covered steel glazing bar - single glazed



Heritage LC7 SG type lead covered steel hip glazing bar - single glazed



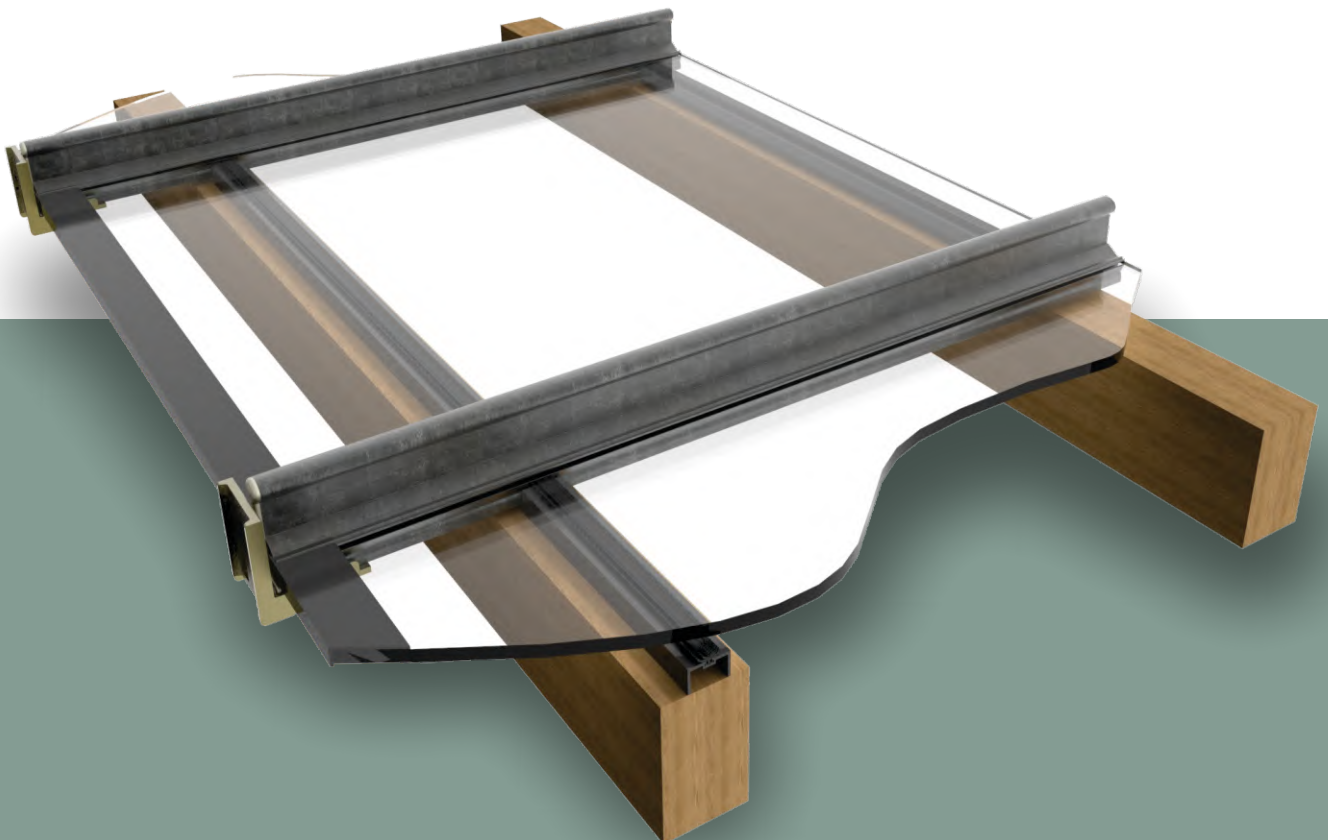




# HERITAGE



Our Heritage range can be used in typical lean-to and duo-pitched designs as well as being available in self supporting hipped skylights, lanterns and polygonal shaped skylights.



Royal Exchange Theatre, Manchester



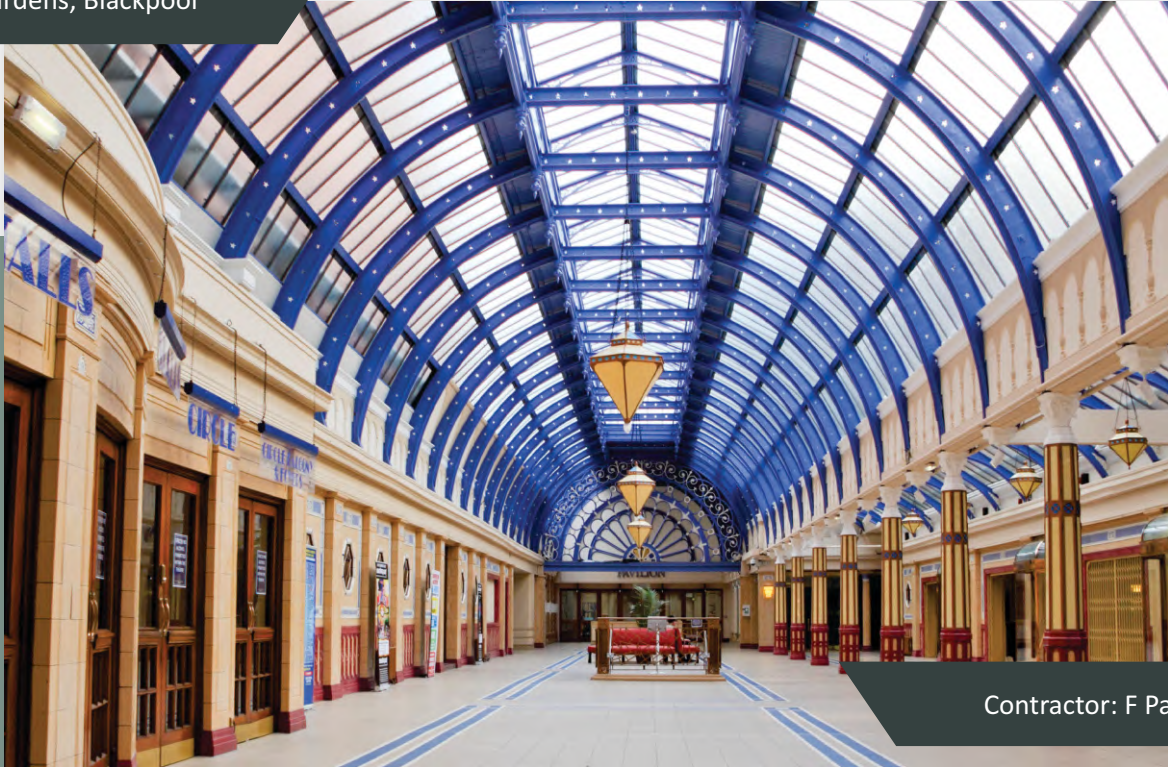
Contractor: Mace

Market Arcade, Newport



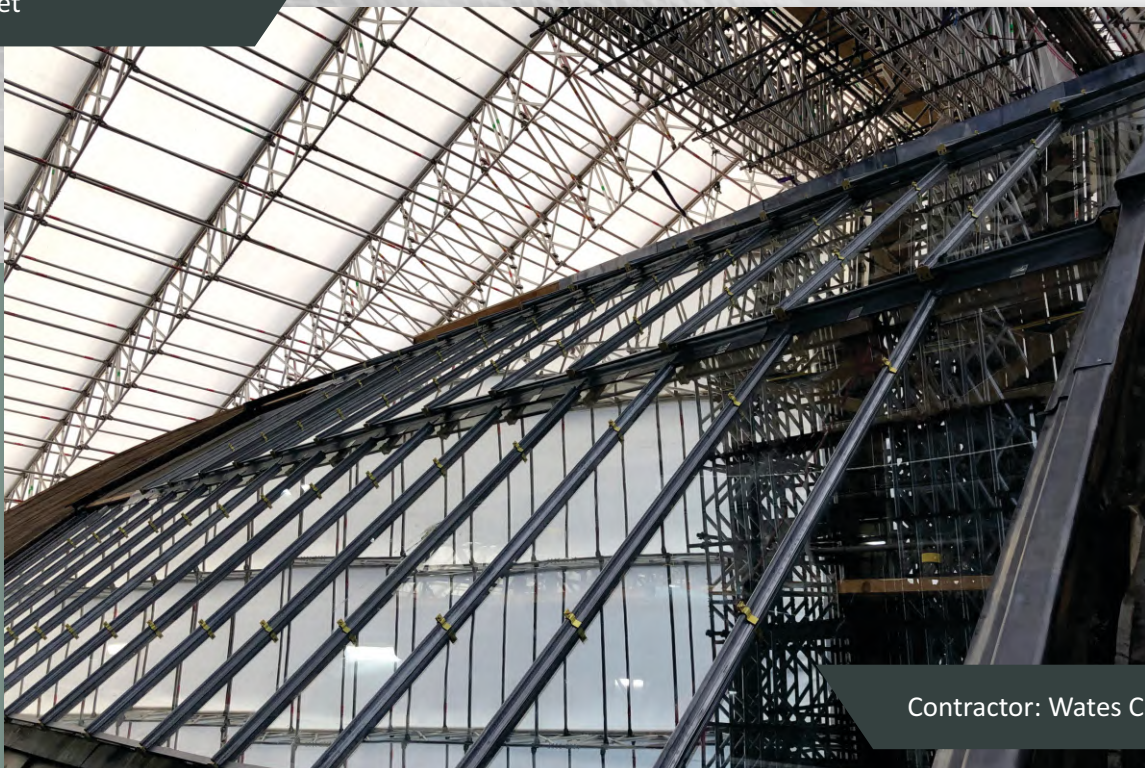
Contractor: Anthony A. Davies Ltd

Winter Gardens, Blackpool



Contractor: F Parkinson Ltd

Derby Market



Contractor: Wates Construction

Aberglasney Mansion, Llangathen



Contractor: John Weaver (Contractors) Ltd

Victoria Baths, Manchester



Contractor: William Anelay Ltd

## Holyhead Market Hall



Contractor: Grosvenor Construction Ltd

## Sheffield Botanical Gardens



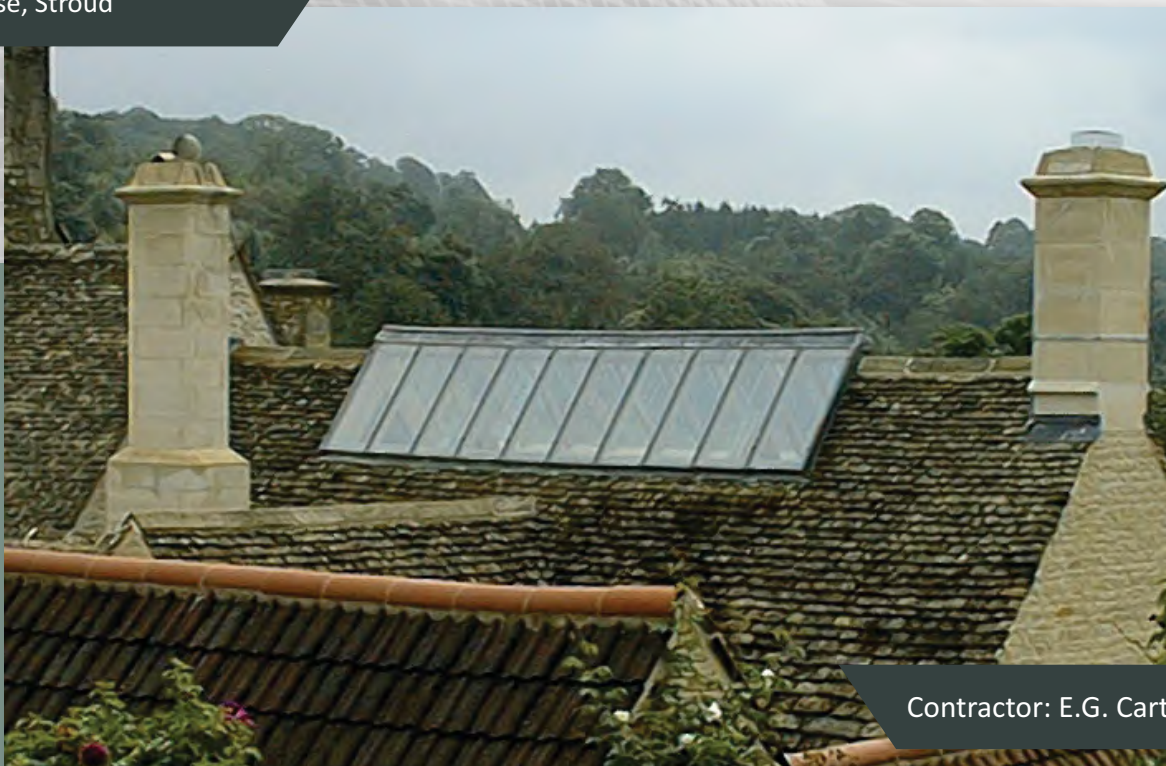
Contractor: Strata Construction Ltd

Private Dwelling



Contractor: Veranda Living

Private House, Stroud



Contractor: E.G. Carter & Co. Ltd

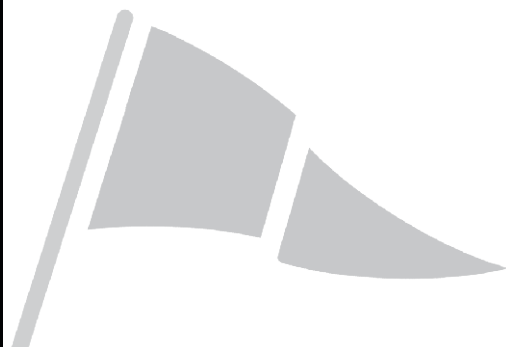




The Standard Patent Glazing Co Ltd  
Flagship House  
Forge Lane  
DEWSBURY  
West Yorkshire  
WF12 9EL

Tel 01924 461213

mail: [info@patent-glazing.com](mailto:info@patent-glazing.com)  
web: [www.patent-glazing.com](http://www.patent-glazing.com)



100 YEARS OF SERVICE